



# Outer Harbor Greenway

March 2016

The South Australian Government is working with the Australian Government to realise a fully upgraded non-stop North-South Corridor. Both governments are working together to build upon the significant amount of planning work that has been undertaken with each contributing \$448 million towards the construction of the \$896 million Torrens Road to River Torrens Project. This includes the recently announced scope extension which includes the section of South Road between Pym Street and Torrens Road in Croydon Park resulting in the grade separation of South Road and Torrens Road and extending the lowered motorway by approximately one kilometre.

During construction of the Torrens Road to River Torrens Project it will be necessary to implement some temporary road closures together with road detours and/or speed restrictions. Whenever temporary closures of cycle networks are required, alternative detours will be clearly signed.

## Outer Harbor Greenway

The Outer Harbor Greenway is a dedicated walking and cycling route which generally follows local streets fronting the Outer Harbor railway line diverging from the railway through Port Adelaide across the Birkenhead Bridge. It will provide a safe, direct, continuous and attractive link between the City to Port Adelaide and the Lefevre Peninsula. The Greenway is currently open for use from Port Adelaide to South Road. An interim route is marked from South Road to the City.

On completion, the Greenway will travel across the new South Road surface roads and lowered motorway via a new overpass. The Greenway will connect at ground level on the eastern South Road surface road along a ramp at the McInnes Street intersection. It will also travel adjacent to the railway line between the eastern South Road surface road and Coglein Street for cyclists travelling towards the city.

The Greenway connection is expected to be open in late 2017.

From April 2016, and during construction of the overpass, a temporary detour for cyclists using the Greenway will be via Port Road. (*please see map overleaf*). Prior to April 2016, any short term detours will be clearly signposted and a map provided on the T2T Alliance website.

Pedestrians and cyclists are encouraged to contact the project team, should they require assistance during construction.



*Artist impression of the Outer Harbor Rail Overpass shared use (pedestrians and cyclists) bridge*



Australian Government  
BUILDING OUR FUTURE

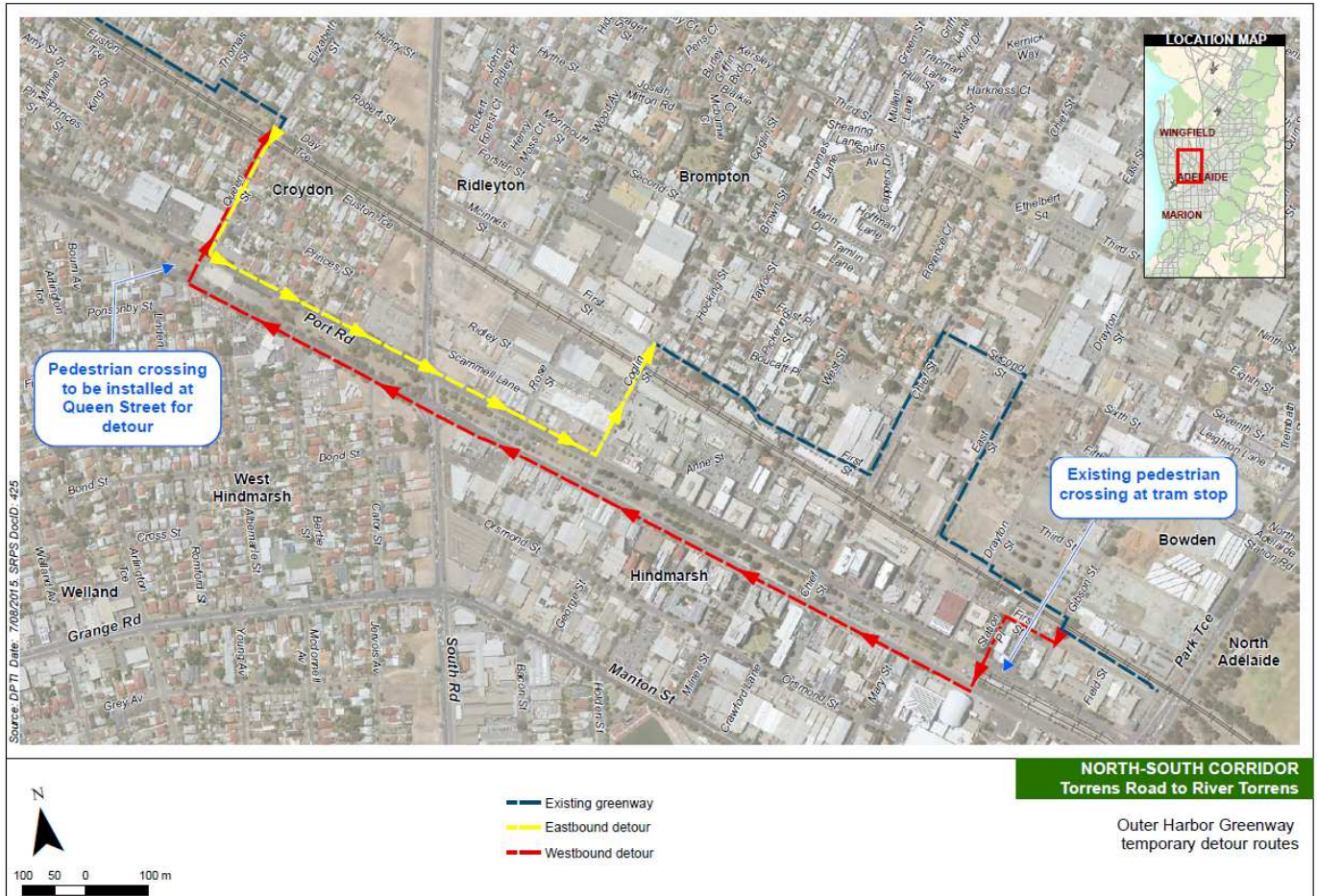


Government of South Australia  
Department of Planning,  
Transport and Infrastructure

TORRENS ROAD TO RIVER  
TORRENS PROJECT



## Outer Harbor Greenway Temporary Detour Route – April 2016 to late 2017



### Linear Park

The Department of Planning, Transport and Infrastructure is providing a connection between the River Torrens Linear Park and the Outer Harbor Greenway with the construction of a pedestrian /cycling bridge across the River Torrens. The bridge will connect McDonnell Avenue, West Hindmarsh and Brickworks Markets, Torrensville and is expected to be open in April 2016.

### For construction related information:

Please contact the project information line: 1300 794 899 or email: [enquiries@t2talliance.com.au](mailto:enquiries@t2talliance.com.au) if you have any questions or wish to join the project mailing list. You can also visit: [www.t2talliance.com.au](http://www.t2talliance.com.au)

